

NNPB BAFFLE

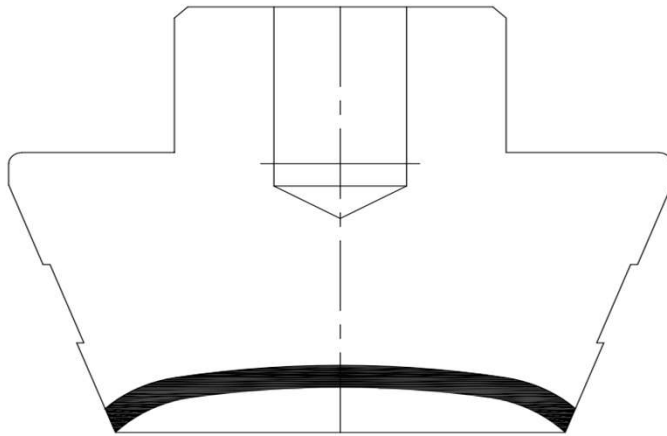
TYPES DESIGN



techflame

Developed by Glass People for Glass People

POST BAFFLE TYPE



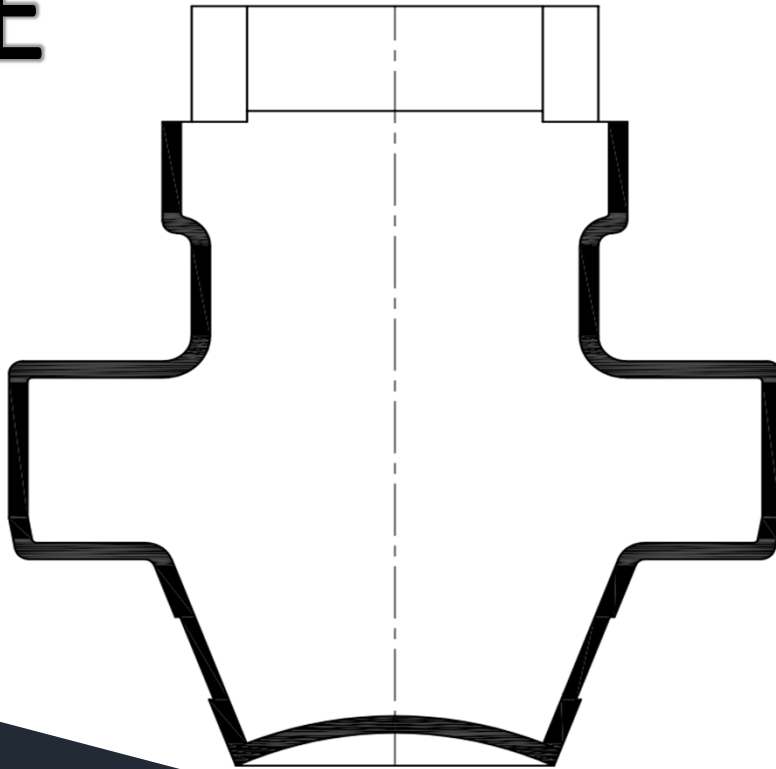
Standard POST BAFFLE:

- Not stable results on Internal pressure test due to baffle marks
- Needed CNC machine for re-reworking after production
- Needed special gauges for controlling dimensions
- Sharp edges sensitive to mechanical wear and damage
- Expensive materials (dameron) for long life

POST BAFFLE



TYPE



TechFlame Improved design : + 2% PTM

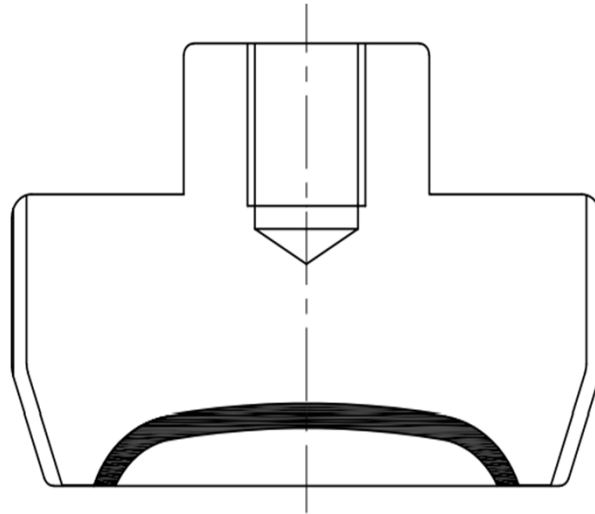
- High average results on pressure test
- No baffle marks
- Needed CNC machine for re-reworking after production
- Needed special gauges for controlling dimensions
- Sharp edges sensitive to mechanical wear and damage
- Expensive materials (dameron) for long life

TH POST BAFFLE



techflame

TYPE



TechFlame design : + 2% PTM – Ultra low weight bottles

- No Baffle marks
- High average results on pressure test - over 22 bars
- Better glass distribution
- Ultra low weight jobs . Specific weight ratio 0.4 - 0.5 for beers and high pressure bottles
- Practically free maintenance



YOUR PARTNER IN HOLLOW GLASS INDUSTRY

Contact us:

E: office@techflame.org

T: +7-995-446-45-66